

PETROLEUM EQUIPMENT



HEAVY DUTY

AGRICULTURE

EMERGENCY BACK-UP FUELING

ESTABLISHED: Calgary, AB | 1968

BRANCH LOCATIONS: Calgary, Edmonton, Vancouver, Winnipeg

KELLER EQUIPMENT SUPPLY LTD.

is a private distribution firm focused on downstream petroleum and heavy-duty shop equipment.

In our commitment to select the finest and most notable manufacturers in the industry, Keller is recognized as a trusted advisor and preferred distributor partner across Western Canada.

We are committed to meeting the shifting demands of our customers and providing prompt customer service at all of our branch locations.

Brad Egeland

President, Keller Equipment Supply

Brad Egeland

*QUALITY PRODUCTS
WITH THE BEST
CUSTOMER SERVICE.*



PREPARED BY: Keller Equipment Supply Ltd.

TEXTS AND PHOTO SOURCE: Manufacturers cited.



Franklin Fueling Systems



BEST  CLASS



In order to bring you unsurpassed quality and reliability with our offerings, Keller Equipment will only partner and supply with the “Best in Class” manufacturers in their fields.





17 Burnside Rd, Bragg Creek, AB



Keller Equipment Supply is the Western Canadian “go-to” for fueling solutions and dispenser modernization. When it comes to traditional gas stations, commercial truckstops, company fleet or card lock fueling operations, Keller Equipment is a proven industry leader.

Wayne
FUELING SYSTEMS

Fuel Dispensers

Retail Fueling Applications

A global fuel dispenser manufacturer for retail and fleet applications, Wayne is leading the way with technological advances on multiple fronts, from eco-fuel solutions and regulation-compliant pay-at-the-pump security to multimedia marketing and groundbreaking site control systems.

DOVER
FUELING SOLUTIONS



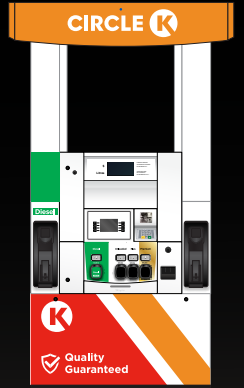
27" INCH SCREEN



12" INCH SCREEN



PROUDLY SUPPLYING



IN PARTNERSHIP WITH DOVER FUELING SYSTEMS

5898 Weaselhead Road Calgary, AB



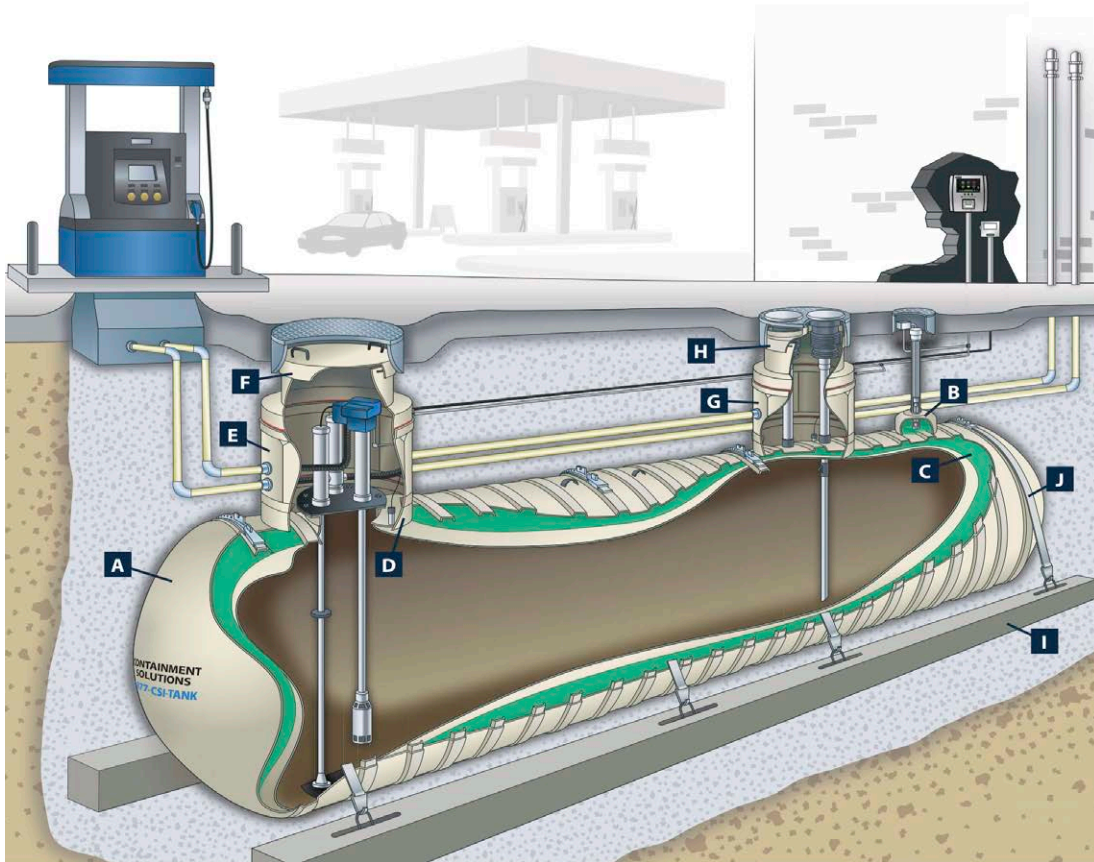


Underground Storage Tanks

Innovative Manufacturing Process

Using an automated process, our tank laminate is consistent in thickness and composition and is fabricated with an inner surface that is not air-inhibited. The resulting tank can safely store petroleum fuel products, alcohols and alcohol gasoline mixtures of virtually any blend. Our proven performance and high quality products have led the industry for 50 years.





STANDARD

Features

- A.** Double-Wall Tank
- B.** Hydrostatic Reservoir
- C.** Monitoring Fluid
- D.** Containment Collars
- E.** Turbine Tank Sump
- F.** Turbine Sump Lid
- G.** Fill / Vapor Tank Sump
- H.** Fill / Vapor Sump Lid
- I.** Deadman Anchor System
- J.** Split-Strap System

Flexible Vent Piping

Eliminate Potential Underground Leak Points

This newest member of the FlexWorks family of fuel-transfer piping is a flexible double-wall vent-pipe solution that is UL and ULc-listed for use with both tank-venting and Stage II vapor-recovery piping, and with all fuel types and alcohol blends in underground storage tank (UST) systems.

VSE Vent Transition Sump

The Next-Generation in Underground Piping

The primary component to OPW's Vent Transition System is the new VSE Vent Transition Sump. The VSE is an at-grade system that utilizes a fiberglass base with powder-coated steel top.



Manholes

Access to underground equipment

OPW Manholes have been designed for use in a wide variety of commercial, service station and industrial driveway applications. They provide access from grade level to underground equipment, including tank sumps, tank riser pipes, monitoring equipment, submersible pumps, valves and piping connections.



Spill Containment

Designed to protect the environment

The spill containers catch spillage to help prevent soil contamination and groundwater pollution. POMEKO/OPW Direct-Fill AST Spill Containers thread on the top of an above ground tank and allow for drainage of spilled product back into the tank.

Tank Gauges

Comprehensive Fuel Management

EVO[™]
SERIES

Driven by our pursuit to better connect every station owner to our lineup of world class Automatic Tank Gauges (ATGs). These new models feature everything you've come to expect in packages that are right-sized for small sites and up-and-coming station networks.



DOVER[®]
FUELING SOLUTIONS

The ProGauge MagLink LX Plus console, the latest tank gauge console, comes with a brilliant 7" color display with intelligent "touch and swipe" technology, enhanced scalability, flexibility and connectivity.



These products enable retailers to create a system of comprehensive fuel information management that can efficiently handle the details of environmental compliance.

Submersible Turbine Pumps

The industry's fuel pumping leader



FE Petro brand submersible pumping systems set the standard for performance, efficiency and safety by which all other systems are measured. With a history of excellence, FE Petro maintains a unique set of system features that sets it apart as the industry's fuel pumping leader.



POS Systems

Station Controller

Bulloch Technologies is the market leader in Petroleum POS Systems. With thousands of systems installed coast to coast, the Bulloch BT9000 is widely used and the best supported station controller available in Canada.





Hanging Hardware

Fuel-Outlet Fittings

We offer the perfect solution for upgrading your new or existing dispenser with a variety of hanging hardware from nozzles, hoses, breakaways, swivels, pump filters and more.

OPW 
a **DOVER** company

a world leading innovator of LED lighting fixtures

CREE OSQ Series Area & Flood Lighting



CREE LED Lighting

Outshine your competition. That's the promise of Cree® LED lighting. It makes service islands more inviting, drivers feel safer and better informed, and interior aisles and shelves pop.



CREE CR 14 Series – Architectural Troffer

AcuityBrands.

XPCNY LED Canopy



ARC1 LED Wall Mount



Acuity Lighting Solutions

Experience the future of retail efficiency with the most extensive lighting portfolio and building systems that enhance outdoor and indoor spaces.

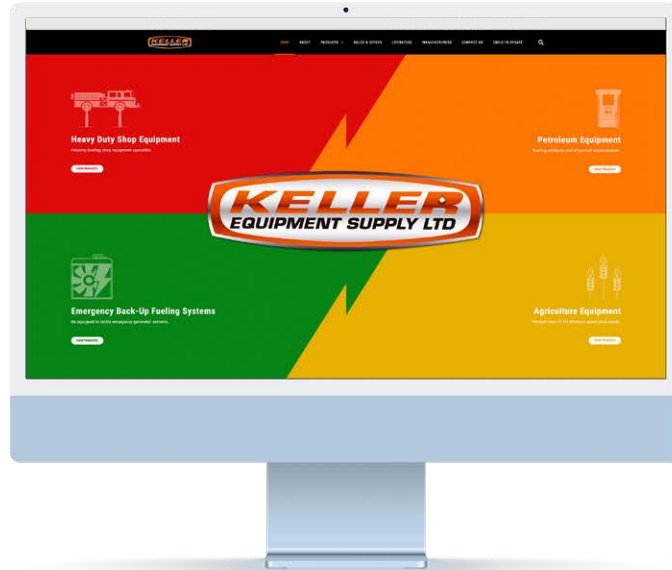


RSX2 LED Area Luminaire



CREE 

FOR A COMPLETE LIST OF PRODUCTS AND MANUFACTURERS



WWW.KELLER.CA

Contact Keller

Calgary, AB

1228 - 26 Avenue S.E.
Calgary, AB T2G 5S2
Phone: (403) 243-8666
Fax: (403) 243-6487

President: Brad Egeland
General Manager: Sean Swanney
Branch Manager: Chriana Clarson



Edmonton, AB

14522 123rd Avenue
Edmonton, AB T5L 2Y3
Branch Manager: Drew Keller
Phone: (780) 452-6640
Fax: (780) 452-2908

Vancouver, B.C.

116-1525 Broadway St.,
Port Coquitlam, B.C. V3C 6P6
Branch Manager: Gino Porco
Phone: (604) 945-5550
Fax: (604) 945-8213

Sales Outlet
Vernon, B.C.
Phone: (250) 549-0481
Fax: (250) 549-1440

Winnipeg, MB

212 Hutchings St.
Winnipeg, MB R2X 2Y2
Branch Manager: Jason Thiessen
Phone: (204) 694-4100
Fax: (204) 694-7222

1.888.535.5373

INFO@KELLER.CA