

# PETROLEUM EQUIPMENT



HEAVY DUTY

AGRICULTURE

EMERGENCY BACK-UP FUELING

**KELLER EQUIPMENT SUPPLY LTD.**

has been providing quality petroleum and industrial equipment since 1968.

With our Head Office located in Calgary, Alberta, our presence in Western Canada consists of four stocking locations in Calgary, Edmonton, Vancouver, and Winnipeg, and a sales office in Vernon, B.C.

We pride ourselves in providing quality products lines that have been carefully selected as the finest and most recognized manufacturers in the industry.

Our customer service team is dedicated to providing knowledgeable and reliable solutions to every inquiry received.

*Brad Egeland*

**Brad Egeland**

President, Keller Equipment Supply

*QUALITY PRODUCTS  
WITH THE BEST  
CUSTOMER SERVICE.*



**PREPARED BY:** Keller Equipment Supply Ltd.

**TEXTS AND PHOTO SOURCE:** Manufacturers cited.



Franklin Fueling Systems



BEST  CLASS

**Wayne**  
FUELING SYSTEMS

In order to bring you unsurpassed quality and reliability with our offerings, Keller Equipment will only partner and supply with the “Best in Class” manufacturers in their fields.

**CREE** 





17 Burnside Rd, Bragg Creek, AB



Keller Equipment Supply is the Western Canadian “go-to” for fueling solutions and dispenser modernization. When it comes to traditional gas stations, commercial truckstops, company fleet or card lock fueling operations, Keller Equipment is a proven industry leader.



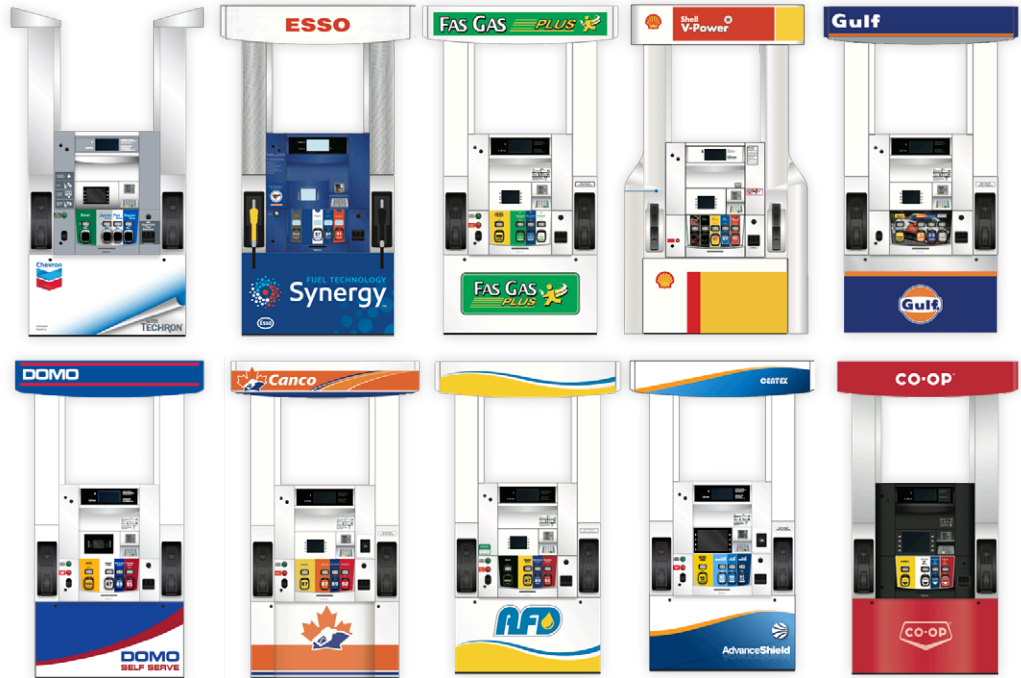
## Fuel Dispensers

### Retail Fueling Applications

A global fuel dispenser manufacturer for retail and fleet applications, Wayne is leading the way with technological advances on multiple fronts, from eco-fuel solutions and regulation-compliant pay-at-the-pump security to multimedia marketing and groundbreaking site control systems.



**PROUDLY**  
Supplying



IN PARTNERSHIP WITH WAYNE  
FUELING SYSTEMS AND BULLOCH  
TECHNOLOGIES

**Wayne** **B** **Bulloch**  
FUELING SYSTEMS TECHNOLOGIES INC.

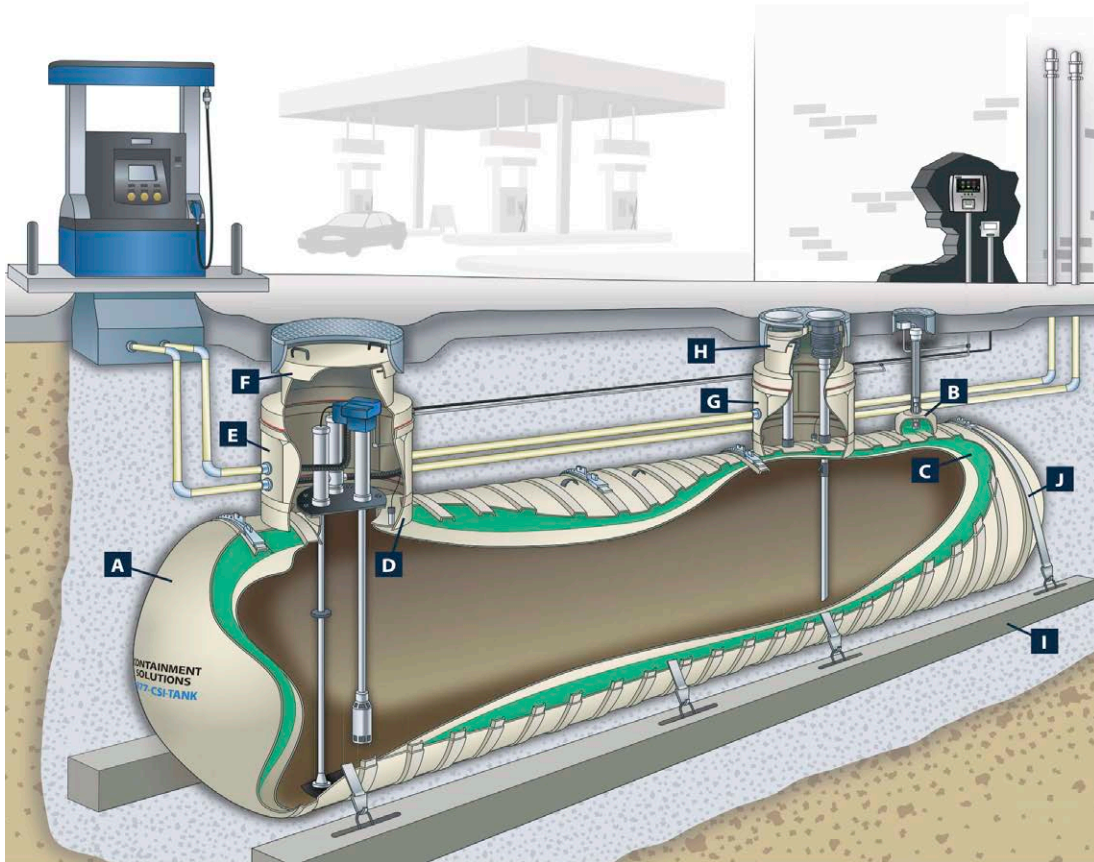


# Underground Storage Tanks

## Innovative Manufacturing Process

Using an automated process, our tank laminate is consistent in thickness and composition and is fabricated with an inner surface that is not air-inhibited. The resulting tank can safely store petroleum fuel products, alcohols and alcohol gasoline mixtures of virtually any blend. Our proven performance and high quality products have led the industry for 50 years.





# STANDARD

## Features

- A. Double-Wall Tank
- B. Hydrostatic Reservoir
- C. Monitoring Fluid
- D. Containment Collars
- E. Turbine Tank Sump
- F. Turbine Sump Lid
- G. Fill / Vapor Tank Sump
- H. Fill / Vapor Sump Lid
- I. Deadman Anchor System
- J. Split-Strap System

# Flexible Piping

## The Next-Generation in Underground Piping

FlexWorks flexible fuel piping solutions by OPW provide advanced capabilities that enable you to offer a higher level of protection, meet Next-Generation compliance needs and help you control costs.

FlexWorks provides for end-to-end double containment, complete testing, monitoring and is totally accessible all the time.



# Manholes

## Access to underground equipment

OPW Manholes have been designed for use in a wide variety of commercial, service station and industrial driveway applications. They provide access from grade level to underground equipment, including tank sumps, tank riser pipes, monitoring equipment, submersible pumps, valves and piping connections.



## Spill Containment

### Designed to protect the environment

The spill containers catch spillage to help prevent soil contamination and groundwater pollution. POMECO/OPW Direct-Fill AST Spill Containers thread on the top of an above ground tank and allow for drainage of spilled product back into the tank.

# Tank Gauges

## Comprehensive Fuel Management

**EVO**<sup>™</sup>  
SERIES

Driven by our pursuit to better connect every station owner to our lineup of world class Automatic Tank Gauges (ATGs). These new models feature everything you've come to expect in packages that are right-sized for small sites and up-and-coming station networks.



SiteSentinel<sup>™</sup>  
**Nano**<sup>™</sup>

The SiteSentinel<sup>®</sup> Nano<sup>®</sup> tank gauge provides inventory and compliance monitoring to retail and commercial sites that is simplified, full-featured and cost-effective.



These products enable retailers to create a system of comprehensive fuel information management that can efficiently handle the details of environmental compliance.

# Submersible Turbine Pumps

The industry's fuel pumping leader



FE Petro brand submersible pumping systems set the standard for performance, efficiency and safety by which all other systems are measured. With a history of excellence, FE Petro maintains a unique set of system features that sets it apart as the industry's fuel pumping leader.



111 Enterprise Way, Oliver, B.C.

**Gulf**

Self Serve **13.99**  
Diesel **13.16**

Convenience Store  
**Tim Hortons**  
DRIVE THRU  
OPEN

**Gulf** 8

Prohibited signs: No mobile phones, No smoking, No keys, No gas cap in nozzle.

LEGAL TO PLACE GAS CAP IN NOZZLE

ATTENTION: STRIKE AND PLEET COVERS MUST BE USED PROPERLY.

Gas prices: 87, 89, 91

**Gulf**



# POS Systems

## Station Controller

Bulloch Technologies is the market leader in Petroleum POS Systems. With thousands of systems installed coast to coast, the Bulloch BT9000 is widely used and the best supported station controller available in Canada.





## Hanging Hardware

### Fuel-Outlet Fittings

We offer the perfect solution for upgrading your new or existing dispenser with a variety of hanging hardware from nozzles, hoses, breakaways, swivels, pump filters and more.

**OPW**   
a **DOVER** company

a world leading innovator of LED lighting fixtures

The CREE CXB SerieS



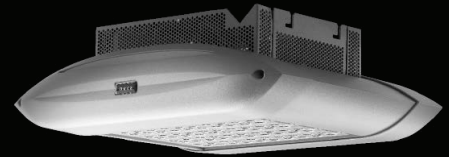
# CREE

## LED Lighting

Outshine your competition. That's the promise of Cree® LED lighting. It makes service islands more inviting, drivers feel safer and better informed, and interior aisles and shelves pop. Meanwhile, Cree® LED lighting solutions reduce energy usage by up to 70% and require virtually no maintenance for up to 10 years.



CREE CR 14 Series – Architectural Troffer

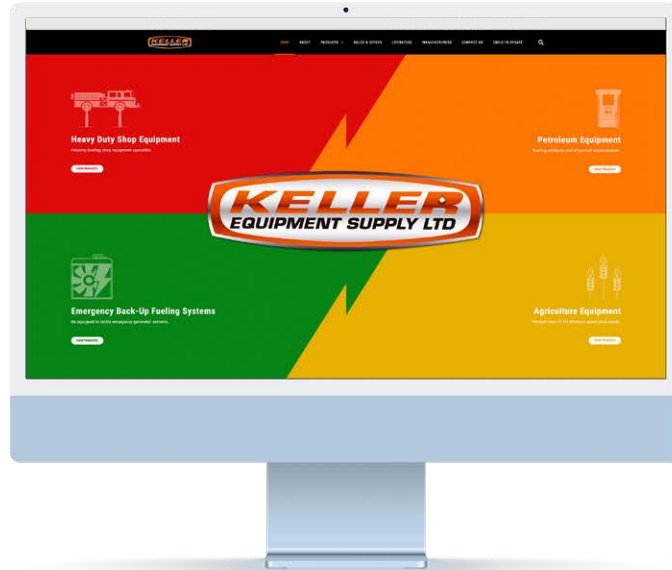


The CREE Edge™ Series



The CPY250™ Canopy

# FOR A COMPLETE LIST OF PRODUCTS AND MANUFACTURERS



WWW.KELLER.CA

# Contact Keller

## Calgary, AB

1228 - 26 Avenue S.E.  
Calgary, AB T2G 5S2

**Phone:** (403) 243-8666

**Fax:** (403) 243-6487

**President:** Brad Egeland

**Branch Manager:** Sean Swanney



## Edmonton, AB

14522 123rd Avenue  
Edmonton, AB T5L 2Y3

**Branch Manager:** Drew Keller

**Phone:** (780) 452-6640

**Fax:** (780) 452-2908

## Vancouver, B.C.

116-1525 Broadway St.,  
Port Coquitlam, B.C. V3C 6P6

**Branch Manager:** Gino Porco

**Phone:** (604) 945-5550

**Fax:** (604) 945-8213

Sales Outlet  
Vernon, B.C.

**Phone:** (250) 549-0481

**Fax:** (250) 549-1440

## Winnipeg, MB

212 Hutchings St.  
Winnipeg, MB R2X 2Y2

**Branch Manager:** Jason Thiessen

**Phone:** (204) 694-4100

**Fax:** (204) 694-7222

1.888.535.5373

INFO@KELLER.CA