



EMERGENCY BACK-UP FUELING SYSTEMS
EMERGENCY BACK-UP FUELING SYSTEMS



The Hub Calgary, Residential Tower



ABOUT KELLER

Keller Equipment Supply Ltd. has been providing quality petroleum and heavy duty equipment since 1968.



YOUR GO-TO SUPPLIER

Our presences in Western Canada consists of four stocking locations in Calgary, Edmonton, Vancouver, Winnipeg, and a sales office in Vernon, B.C.



QUALITY PRODUCTS

We pride ourselves in providing quality product lines that have been carefully selected as the finest and most recognized manufacturers in the industry.



CUSTOMER SERVICE

Our customer service team is dedicated to providing knowledgeable and reliable solutions to every inquiry received.

BEST IN CLASS



Franklin Fueling Systems

In order to bring you unsurpassed quality and reliability. Keller Equipment Supply will only partner and supply with the "Best in Class" manufacturers in their field.



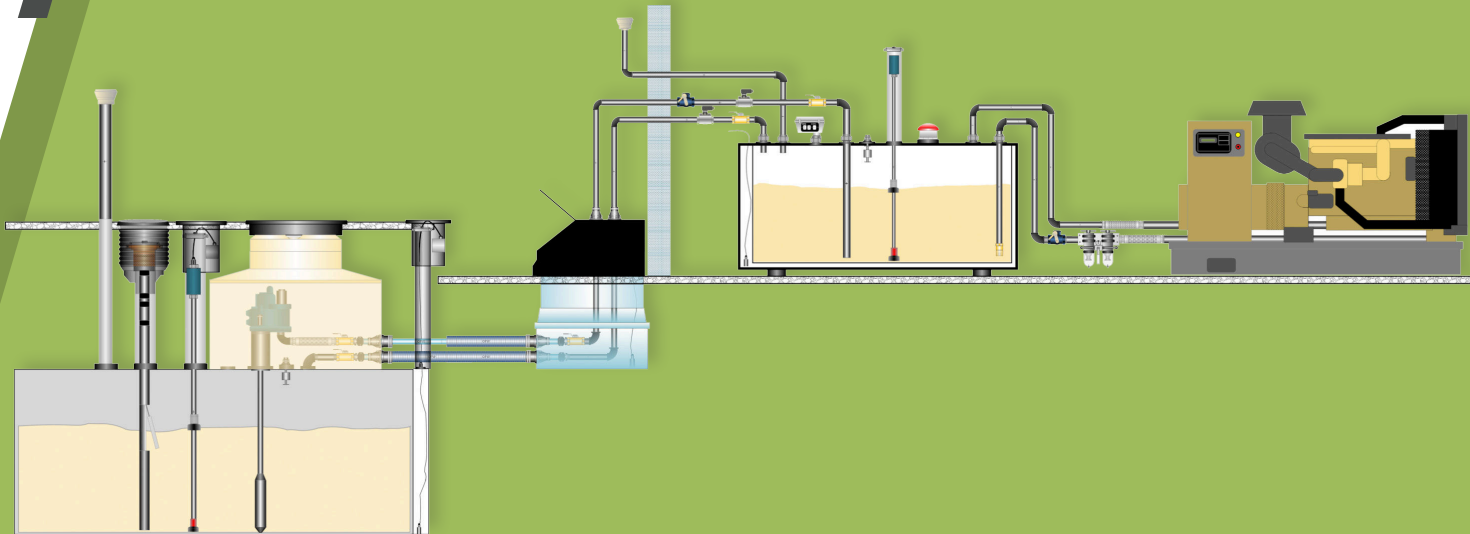
CONTAINMENT
SOLUTIONS_®



MANUFACTURERS



GENERATOR COMPONENTS



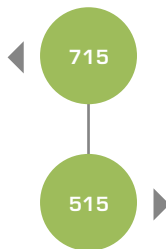
REMOTE FILL EQUIPMENT

Find a fill box that provides containment of small spills during tank filling operations.



AST REMOTE FILL BOX

The 715 Series remote fill box is a 10 gallon capacity cabinet that provides containment of small spills during tank filling operations.



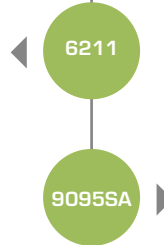
AST REMOTE SPILL CONTAINER

The 515 Series remote spill container is a 15 gallon capacity cabinet that provides containment of small spills during tank filling operations.



DIRECT-FILL AST SPILL CONTAINER

POMECO/OPW Direct-Fill AST Spill Containers thread on the top of an above ground tank and allow for drainage of spilled product back into the tank, and help prevent soil contamination.



OVERFILL PREVENTION VALVE

Used in a pressurized tight fill application, the valve helps prevent tank overfills by closing when the liquid level reaches a pre-set warning level (90-95% full).

TANK EQUIPMENT

Solutions for underground and above ground storage tanks



UNDERGROUND STORAGE TANKS

Using an automated process, CSI's tank laminate is consistent in thickness and composition and is fabricated with an inner surface that is not air-inhibited. The resulting tank can safely store petroleum fuel products, alcohols and alcohol gasoline mixtures of virtually any blend. CSI's proven performance and high quality products have lead the industry for 50 years.

DAY TANK PACKAGES

A reliable fuel storage and delivery system for diesel engine generator sets.

DAY TANKS

Keller Equipment Supply partners with a number of tank manufacturers to find the right fit for you, from drums, steel tanks, and vertically stacked tanks we supply for multiple solutions and applications.

Contact your local Keller Representative for details and pricing.



BRUGG PIPING

For the efficient and safe transport of dangerous liquids.



FLEXWELL® SAFETY PIPE

FLEXWELL® Safety Pipe was specially designed for the underground transport of flammable, water-hazardous fluids. It can be used as a suction or positive pressure supply pipe. The FLEXWELL® Safety Pipe can be permanently monitored by means of suitable leak detectors.

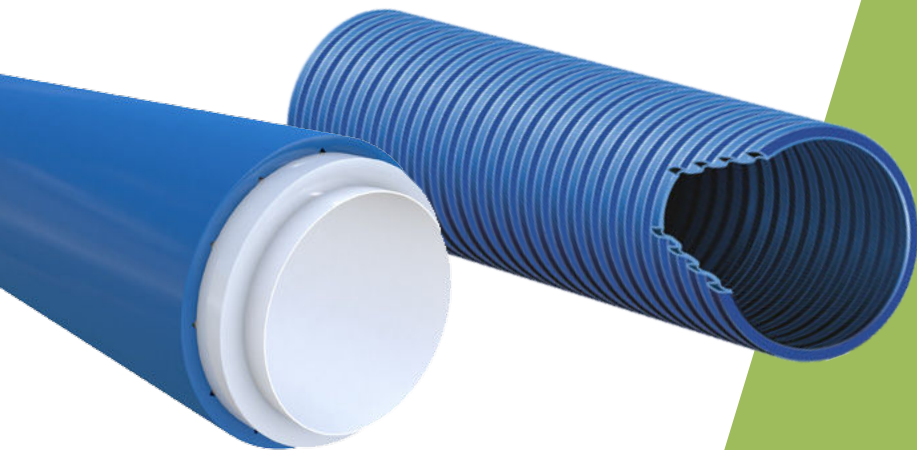
As a rule these emergency generators are installed on the roofs of buildings and need a day tank. The connection between storage tank and day tank is often made using FLEXWELL® Safety Pipe, which has proven itself over decades of service in this application. Thanks to the double-walled construction of the safety piping all legal requirements and fire protection standards are fulfilled.

BRUGG
Pipes



FLEXIBLE PIPING

20 Years of Excellence in Underground Pipe Performance



DUAL LAYER ACCESS PIPE

A 4" diameter corrugated flexible conduit used to provide access to and permit the future replacement of the Flex piping if desired.

INCREASED FLEXIBILITY

The force required to bend the pipe has been reduced to facilitate piping layout. This makes installation quicker and easier, especially in cold weather.

PIPE WEIGHT

Has been reduced to facilitate shipping and handling.

PIPE MEMORY

Inherent pipe memory has been reduced significantly to facilitate connection of pipes inside sumps.

RESIGNED PROFILE

Enhanced leak detection performance.

SWIVEL BOLT-ON COUPLINGS & ENTRY BOOTS

Swivel couplings and fittings designed exclusively to interconnect with FlexWork Piping



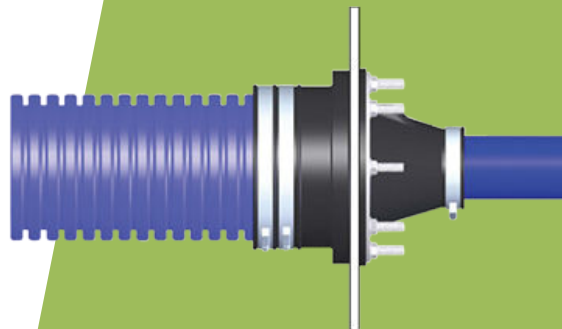
NEW GENERATION

FlexWorks Swivel Bolt-On Coupling features a double wall design that eliminates the need to trim back the secondary jacket.

INTERSTITIAL MONITORING

Permanent access to the pipes interstice allows for future integrity testing or continuous interstitial monitoring.

FlexWORKS
BY OPW FUELING CONTAINMENT SYSTEMS



DOUBLE FLEXIBLE ENTRY BOOTS

FlexWorks™ Double Flexible Entry Boots are designed to seal the sump penetration. These entry boots incorporate both internal and external band clamps to provide additional sealing in harsh environments.

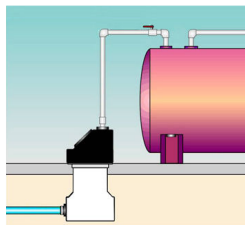
TRANSITION SUMPS

For use in above-grade and below-grade applications, and available in both fiberglass and polyethylene.



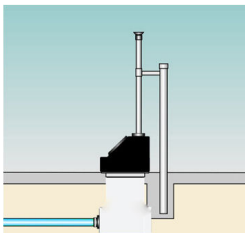
PST-4630 TRANSITION SUMP

Large, heavily ribbed polyethylene containment chamber provides structural rigidity. Adjustable to a minimum of 26"



AST APPLICATION

Provides secondary containment and accessibility to the fittings that connect the underground supply piping to the rigid supply piping that leads from an above ground storage tank.



VENT STACK APPLICATION

Transition sump is used for containment and accessibility to the fittings at the vent stack, located where the underground vent piping connects to the rigid vent stack piping.



DUPLEX FUEL OIL SYSTEMS

The Albany FO Series Simplex and Duplex Pump Sets



HOW IT WORKS

Its innovative compact design has a minimal footprint while delivering 1 to 150 GPM of fuel to serve emergency generators and boilers.

The mechanical design integrates the Albany 'G' and 'H' Series positive displacement Helical Gear pumps, and the Albany 'BS' Series Basket Strainer.

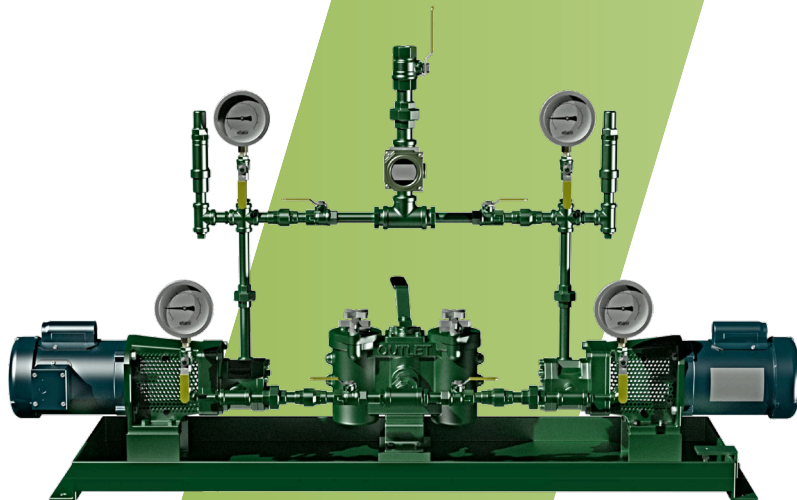
The assembly is complete with check valves, ball valves, liquid filled pressure gauges and compound suction vacuum gauges, relief valves, pressure switch, heavy duty schedule 80 piping, and flexible hose assembly.

The unit is mounted on an integral containment with leak detection monitoring.



APPLICATIONS

Designed for emergency diesel generator facilities as well as dual fuel fired boiler facilities.



since 1906
albany
pump company ltd.

DUPLEX FUEL OIL SYSTEMS

Viking offers complete packaged duplex fuel skids that can be custom built to orders



HOW IT WORKS

- Compact integrated system that allows you mounting flexibility
- Reliable fuel delivery with plumbed-and-wired standby pump
- Alternate pumps automatically minimize run time on any one pump
- Proven, factory manufactured sets built custom to your order UL-CSA electrical control panels
- Quick access comparison sheets, specification sheets and illustration drawings
- Easily requested CAD submittal drawings.



APPLICATIONS

Designed for emergency diesel generator facilities as well as dual fuel fired boiler facilities.

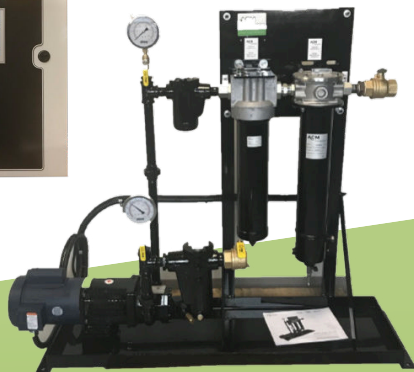
**VIKING
PUMP**

FUEL POLISHING & FILTRATION

Removes water, sludge, and other contaminants from fuel storage tanks through filtration.



ACM
Filtration



ACM PLC CONTROL PANEL

The ACM-1EIS5-BS-G10-ENCL is a ULC Certified, fully automated diesel fuel filtering and polishing unit mounted in a NEMA rated enclosure for harsh environment or outdoor application. ACM Systems insure fuel in storage tanks are as clean and water-free as possible.



AXI
INTERNATIONAL

STS 6004 FUEL MAINTENANCE SYSTEM

The STS 6004 is a programmable, fully automated, fuel maintenance system that removes contaminants from fuel storage tanks through routine filtration. The system's NEMA 4 rated enclosure allows for both outdoor and indoor installations by protecting the system from windblown dust and rain, hose directed water, and ice formations. With a 4 GPM flow rate, the STS 6004 can polish up to 1,920 gallons (7,268 liters) of fuel in a runtime of 8-hours.

AUTOMATIC TANK GAUGES

Enabling retailers to create a system of fuel information management that can efficiently handle the details of environmental compliance.

EVO™
SERIES

Driven by our pursuit to better connect every station owner to our lineup of world class Automatic Tank Gauges (ATGs). These new models feature everything you've come to expect in packages that are right-sized for small sites and up-and-coming station networks.



SiteSentinel®
Nano™

The SiteSentinel® Nano® tank gauge provides inventory and compliance monitoring to retail and commercial sites that is simplified, full-featured and cost-effective.



DIGITAL PROBES

Digital inventory and leak detection probes provide accurate tank level monitoring and reporting with optional leak detection capabilities.



924B MAGNETOSTRICTIVE PROBE

The Model 924B Magnetostrictive Probe features standard stainless-steel construction, making it ideally suited for use with gasoline, diesel, ethanol and biodiesel.



LEVCON-CLT

Albany LEVCON series level switches are typically used for providing signals for pump or valve operation and high and low alarm signals. A typical application may be a tank filling process requiring a low alarm, pump on, pump off and high alarm liquid level sensing.



INCON FMP-LL3

MITIGATE STATIC FRICTION

Franklin digital probes feature a unique and innovative vibration motor mounted inside the probe head. Every 5 minutes, the vibration motor automatically pulses. This frees the floats from any static friction with the probe shaft and mitigates the negative effects static friction can have on level readings or leak detection accuracy.

BOTTOM MOUNT INSTALLATION

With no hanging installation kit needed, the probe can simply be placed in the tank riser and rested on the tank bottom.



Franklin Fueling Systems

LIQUID SENSORS

ULS may be installed in locations where the presence of liquid indicates a leak has occurred.



**TSP-ULS
LIQUID SENSOR**

The liquid sensor (ULS) is a low cost sensor which may be used with all EVO™ Series fuel management systems.



**SINGLE LEVEL
SUMP SENSOR**

Delivers the ability to monitor all areas of the fuel site – tank interstice, piping sumps, STP containment sumps, dispenser sumps, pans and monitoring wells.



**LIQUID ONLY
INTERSTITIAL SENSOR**

Used primarily in the interstitial area of double-wall tanks. Contains a float switch that activates in the presence of liquid.



Franklin Fueling Systems



LEAK DETECTION

Fuel sensing cable that can detect and locate spills.



TRACETEK TT5000

TraceTek TT5000 sensing cable detects the presence of liquid hydrocarbon fuels at any point along its length, yet does not react to the presence of water. Installed with a TraceTek alarm and locating module, the cable senses the liquid, triggers an alarm, and pinpoints the location of the leak.



TTA-SIM

The TTA-SIM has been designed for use with TraceTek sensing cables, point sensors and normally open, dry contact devices (float switch, pressure or vacuum switch, optical probe with adapter, limit switch, etc.). Up to 150 m (500 ft) of sensor cable can be monitored by the TTA-SIM.

KTECH OVERFILL ALARMS

20 Years of Excellence



KTECH AL101

The Ktech Model AL101-1 Audible Visual Level Overfill Alarm accepts a switch contact input and provides an audible alarm signal when the external contact is closed.

APPLICATIONS

Overfill protection, Inventory Control, and Leak detection.

Ktech
Industrial Products Inc.

KTECH AL200

The Model AL201-1 is a weatherproof alarm panel. It must be mounted in a non- hazardous location.



FUEL OIL ACCESSORIES

Fuel oil specialty devices from overfill valves, emergency shut-off, anti-siphon, and more for specific uses to complete the system.



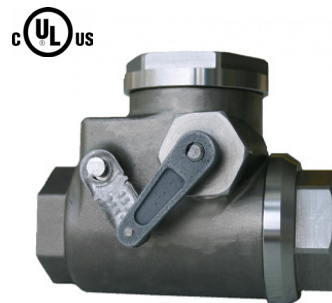
**ANTI-SIPHON VALVE
OPW 199ASV**

Factory-Adjusted dydrostatic head pressure settings allows for quick, safe and easy installation on above ground tanks.



**SOLENOID VALVE, SS
MORRISON 710SS**

Normally closed solenoid valves are used to help prevent the accidental siphoning of a product from a tank in the event of a leak downstream below the liquid level.



**EMERGENCY SHUT-OFF VALVE
MORRISON 446**

The 446 normally open valve is designed to shut off liquid flow in the event of a fire or excessive temperatures.



CONTACT US



VANCOUVER, BC
116-1525 Broadway St.,
Port Coquitlam, B.C., V3C 6P6
Phone: (604) 945 5550
Fax: (604) 945 8213

VERNON, BC
Jim Mottus
SALES OUTLET
Phone: (250) 549 0481
Fax: (250) 549 1440

EDMONTON, AB
14522 123rd Avenue
Edmonton, AB, T5L 2Y3
Phone: (780) 452 6640
Fax: (780) 452 2908

WINNIPEG, MB
212 Hutchings St.
Winnipeg MB, R2X 2Y2
Phone: (204) 694 4100
Fax: (204) 694 7222

TOLL FREE

1.888.535.5373

EMAIL

INFO@KELLER.CA





Head Office CALGARY, AB

1228 - 26 Avenue S.E.
Calgary, AB T2G 5S2

Phone: (403) 243 8666
Fax: (403) 243 6487

VISIT US

WWW.KELLER.CA